



TECHNICAL CIRCULAR

TC No: 010/2020
15 July 2020

TO SHIP OWNER/SHIP MANAGER/INTERESTED PARTIES

Designation of SO_x Emission Control Area (SECA) in Republic of South Korea

1. Effective from 01 September 2020, the South Korea government will implement mandatory SO_x Emission Control Areas (SECAs) requiring the use of 0.1% sulphur fuel by ships in specified port areas. South Korean Administration has designated and notified SO_x Emission Control Areas (SECA) around following major South Korean ports of:
 - a) Incheon, Pyeongtaek-Dangjin Area.
 - b) Yeosu and Gwangyang port (including Hadong port).
 - c) Busan port area. d. Busan port west side sea area.
 - d) Ulsan port area (including Mipo port).

2. Timeframe for the sulphur oxide emission control area is as follows;
 - a) Berthing ships: 1 hour after completion of berthing until 1 hour before un-berthing time.
 - b) Anchoring ships: 1 hour after completion of anchoring until 1 hour before heaving up time.

3. Further, effective from 01 January 2022 onwards, all ships will be required to use 0.1% m/m sulphur fuel when navigating or berthing inside the Emission Control Areas (from entry into emission control area until the exit) or an approved equivalent arrangement is to be used.

4. Approved equivalent arrangement

The use of an exhaust gas cleaning system (EGCS) will be allowed as an equivalent arrangement if the EGCS is at least as effective in terms of SO_x emission reductions (4.3 SO₂(ppm)/CO₂ (% v/v)) as compared to using a fuel oil with sulphur content not exceeding 0.1% m/m and satisfies the criteria set by South Korea.

5. Recording requirements

Ships operating inside Korean SECAs shall record the fuel oil change-over and etc. in the engineer's logbook, or alternatively record the operation status of the EGCS. Ships using fuel oils with sulphur content not exceeding 0.1% m/m to comply with the requirements, and changing fuel oils for Korean SECAs shall record:

- a) Kind of fuel oil and the date, time and position of the ship when fuel-oil-change-over operation is completed;
- b) The remaining volume of fuel oil in each tank (only applicable to fuel oil with sulphur content not exceeding 0.1% m/m); and
- c) Sulphur content of fuel oil.

The ship shall keep the above engineer's logbook on board for a period of not less than 12 months from the time of delivery of the fuel oils to the ship.

6. Fuel changeover procedure

Those ships using separate fuel oils stored in separate tanks (to comply with sulphur content limit requirements) shall carry a written procedure showing how the fuel oil change-over is to be done before entering or leaving a Korean SECA.

7. The detailed co-ordinates of the limits of the Emission Control Areas are provided in the attached document (Annex).

8. Ship Owners/Operators and Masters are advised to be guided by above and take appropriate measures when calling above mentioned Korean ports to ensure compliance to relevant requirements. We recommend clarifying port requirements with the agent or port authorities in due time before arrival.

For information, you may contact:

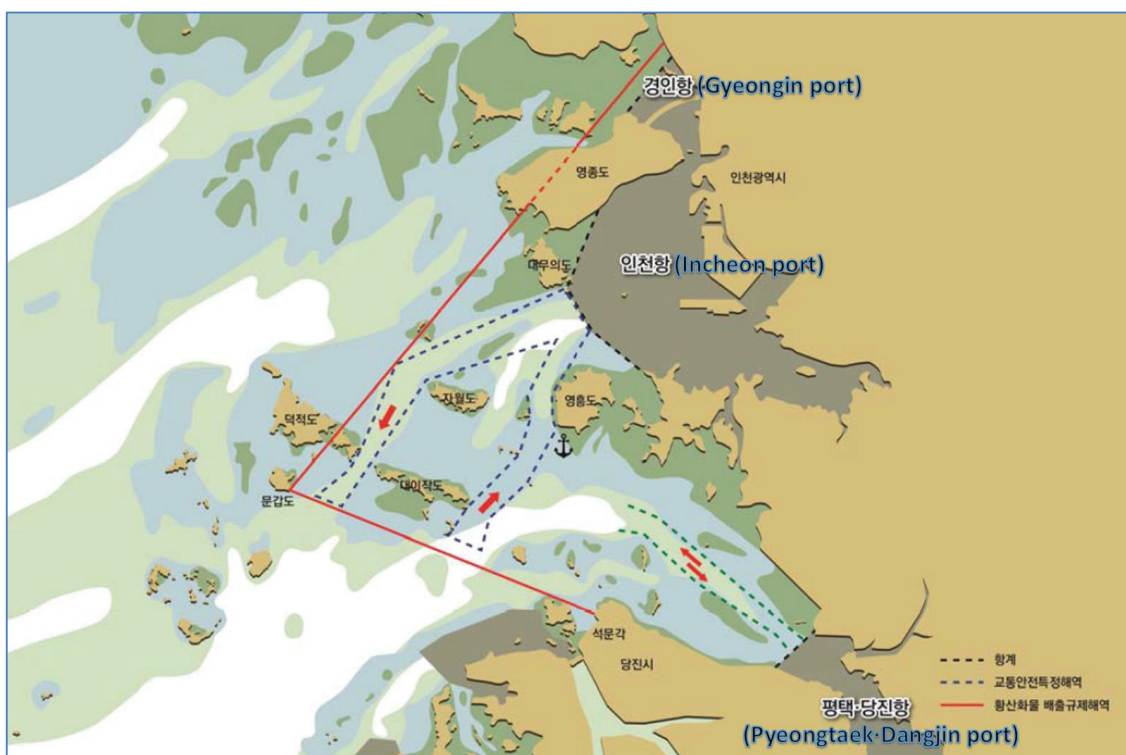
SCM Office : +603-55138170 Fax : +603-55138086 Email : infohq@myscm.com.my

Captain M. Prathaban	+6012-2997278	mprathaban@myscm.com.my
Mohd Marby	+6012-6071147	marby@myscm.com.my
Mohd Nor Sahat	+6012-2349521	mdnor@myscm.com.my
Sosanto Yusup	+6013-3841229	sosanto@myscm.com.my

SOx Emission Control Area (SECA) designated within Incheon port (including Gyeongin port) & Pyeongtaek·Dangjin port areas

The sea surface enclosed by geodesic lines connecting the following coordinates (as indicated by red lines in the below chart):

Point	Latitude	Longitude
1	37° 36' 00" N	126° 33' 42" E
2	37° 10' 00" N	126° 06' 30" E
3	37° 02' 54" N	126° 29' 00" E



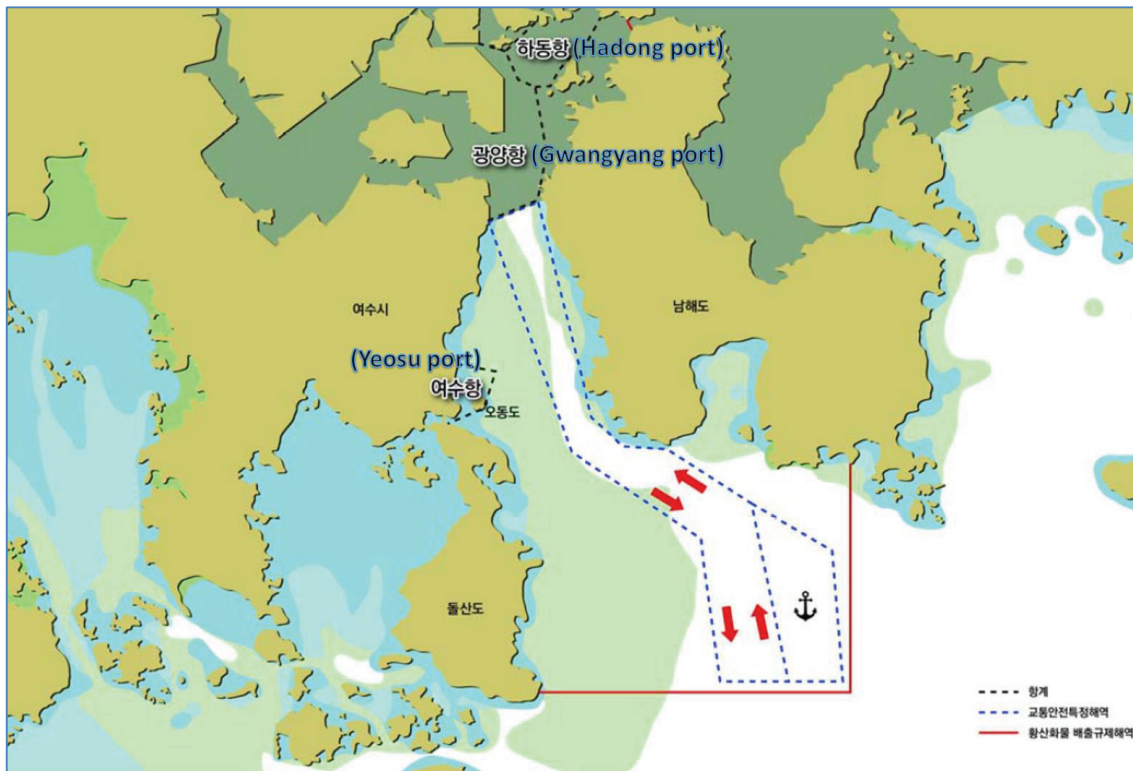
(SECA designated within Incheon port (including Gyeongin port) & Pyeongtaek·Dangjin port areas)

(Source: www.mof.go.kr)

SOx Emission Control Area (SECA) designated within Yeosu·Gwangyang port
(including Hadong port) areas

The sea surface enclosed by geodesic lines connecting the following coordinates (as indicated by **red lines** in the below chart):

Point	Latitude	Longitude
1	34° 35' 24" N	127° 48' 20" E
2	34° 35' 24" N	128° 00' 26" E
3	34° 42' 42" N	128° 00' 26" E
4	34° 56' 22" N	127° 52' 06" E
5	34° 56' 46" N	127° 51' 56" E



(SECA designated within Yeosu·Gwangyang port (including Hadong port) areas)

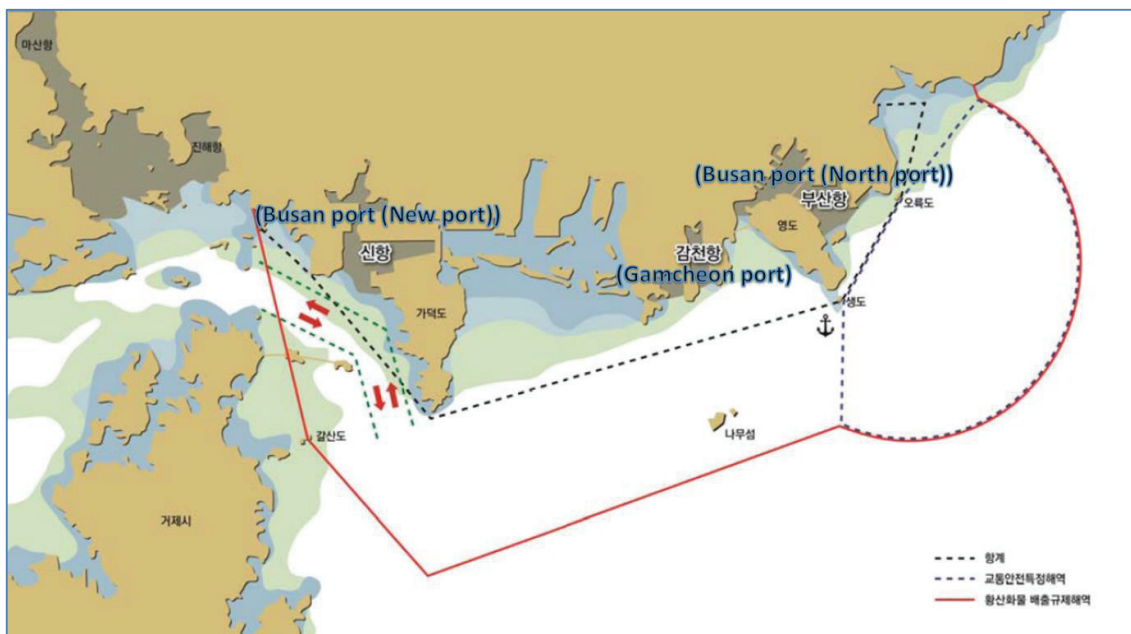
(Source: www.mof.go.kr)

SOx Emission Control Area (SECA) designated within Busan port area

The sea surface enclosed by geodesic lines connecting the following coordinates (as indicated by red lines in the below chart):

Point	Latitude	Longitude
1	35° 09' 36" N	129° 11' 32" E
2	35° 09' 04" N	129° 11' 44" E
3	The outer arc of the special sea areas for traffic safety in Busan area as designated by Enforcement Decree of the Maritime Safety Act	
4	34° 58' 46" N	129° 04' 14" E
5	34° 55' 00" N	128° 50' 00" E
6	34° 58' 41.5" N	128° 49' 19.5" E
7	35° 02' 01.4" N	128° 47' 37.8" E
8	35° 03' 19.5" N	128° 43' 23.5" E
9	35° 05' 42" N	128° 42' 53" E

(Applicable only to ships using Busan New Port)		
Point	Latitude	Longitude
1	35° 03' 19.5" N	128° 43' 23.5" E
2	34° 58' 30" N	128° 45' 21" E
3	34° 55' 00" N	128° 50' 00" E
4	34° 58' 41.5" N	128° 49' 19.5" E
5	35° 02' 01.4" N	128° 47' 37.8" E
6	35° 03' 19.5" N	128° 43' 23.5" N



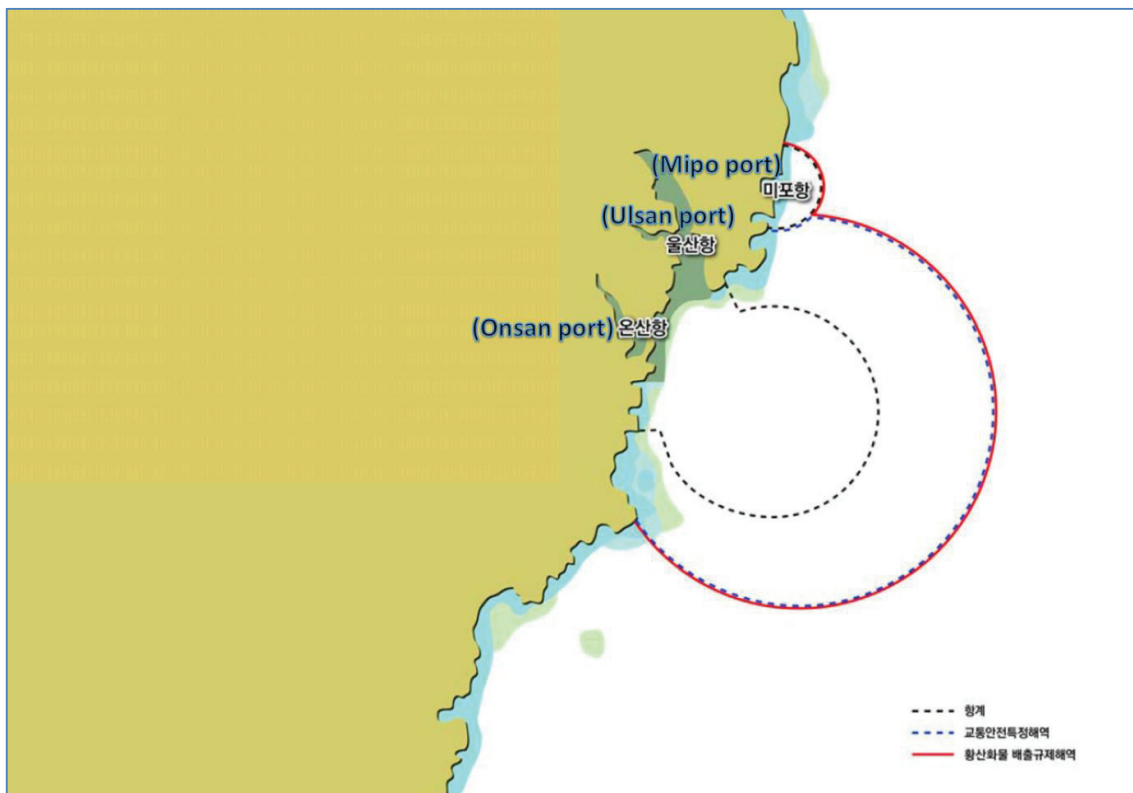
(SECA designated within Busan port area)

(Source: www.mof.go.kr)

SOx Emission Control Area (SECA) designated within Ulsan port area

The sea surface (as indicated by red lines in the below chart) including the following:

1. The arc (The outer arc of the special sea areas for traffic safety in Ulsan area) with radius of 6.0 miles and the centre at (Latitude)35° 24' 37" N and (Longitude)129° 27' 52" E; and
2. Ulsan port (Ulsan main port, Onsan port, Mipo port, Ulsan new port) designated in accordance with Article 3 of the Port Act.



(SECA designated within Ulsan port area)

(Source: www.mof.go.kr)